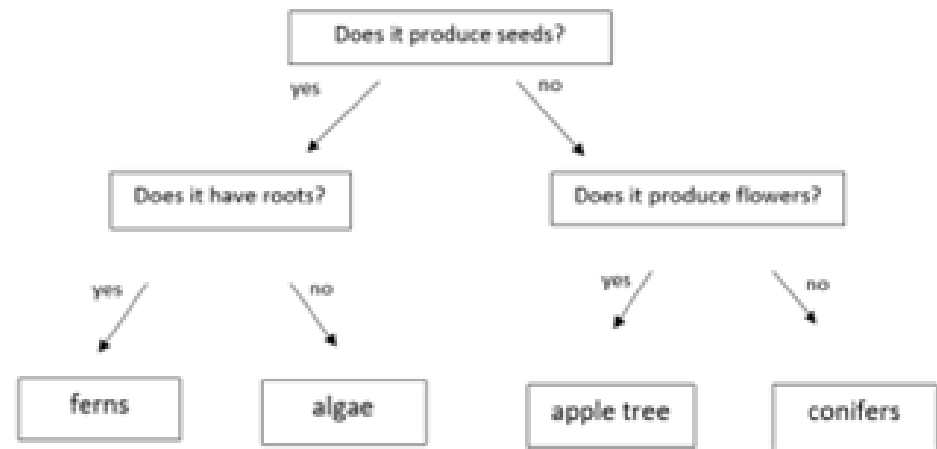


Key Vocabulary	
organism	an individual living thing , such as a plant, an animal or a bacteria
classifying	to put into groups according to things that are similar
unique	being the only one of its type
habitat	the natural environment of an animal or plant
pollination	getting pollen to the stigma so the plant can reproduce
fertilisation	joining of pollen and the egg to make a new seed
seed dispersal	when the seeds are transported to a new place

Function of plant parts		
roots	<ul style="list-style-type: none"> necessary for nutrition absorb (pull) minerals and water from the soil keep the plant steady and upright in the ground. 	
stem/ trunk	<ul style="list-style-type: none"> necessary to hold the plant and move it towards light carries water to the leaves 	
leaves	<ul style="list-style-type: none"> necessary for nutrition make the food for the plant using water, sunlight and carbon dioxide 	
flowers	<ul style="list-style-type: none"> necessary for reproduction 	
	petal	attracts pollinators to feed on nectar
	sepal	protects the flower when it's a bud
	anther	contains pollen
	stigma	catch pollen
	ovary	contains eggs

Classification Keys	
classification key aka dichotomous key	set of questions to help classify organisms



Types of Plants	
flowering plants	<ul style="list-style-type: none"> Produce flowers which attract pollinators All reproduce from seeds e.g., mango, apple, sunflowers
non-flowering plants	<ul style="list-style-type: none"> Do not have flowers or fruits Some reproduce from spores e.g., algae, mosses, ferns Some reproduce from seeds e.g., conifers